

External Drain X02 / XB3

= "Most Popular"

B

Filters, Regulators, Lubricators



X02-04-000



XB3-04-M00

Specifications

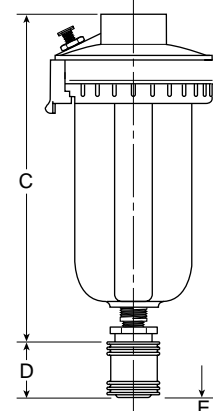
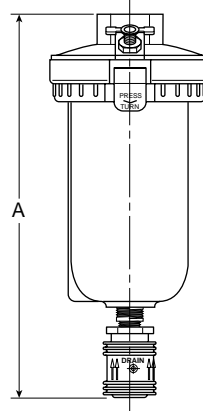
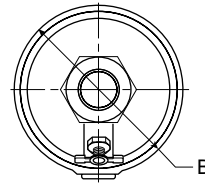
Drain Rate	80 GPH @ 100 PSIG (300 l/h @ 6.9 bar)	
Maximum Supply Pressure	Plastic Bowl	150 PSIG (10.3 bar)
	Metal Bowl	200 PSIG (13.8 bar)
Operating Temperature	Plastic Bowl	32° to 125°F (0° to 52°C)
	Metal Bowl	32° to 150°F (0° to 65.5°C)
Port Size	NPT / BSPP-G 1/2	
Weight	XB3	1.42 lb. (0.6 kg)
	X02	1.26 lb. (0.6 kg)

Materials of Construction

Body	Zinc
Float Assembly	Plastic with Stainless Steel Internals
Manual Override	Brass

Features

- Available in NPT and BSPP-G Ports
- The Manual Override Allows Drainage at Any Time Without Waiting
- Use of the Manual Override Does Not Interfere with the Normal Operation of the Drain
- To Assist in Compliance with EPA Regulations, a 1/8" Pipe Thread Allows the Liquid Discharge to be Piped Away. The X02 Has No Manual Override for the Automatic Drain.



D = Bowl Removal
E = Bowl Removal

Dimensions

Models	Inches (mm)	A	B	C	D	E
Standard Unit XB3-04-000		7.00 (179)	3.06 (78)	6.00 (152)	1.00 (25)	1.66 (42)
Standard Unit X02-04-F00		5.87 (149)	3.06 (78)	—	—	2.88 (73)
Metal Bowl XB3-04-M00		7.50 (190.5)	3.06 (78)	6.50 (165)	1.00 (25)	1.66 (42)
Metal Bowl X02-04-FM0		5.87 (149)	3.06 (78)	—	—	2.88 (73)

 = "Most Popular"

External Drain

Wilkerson drains are designed to remove liquid oil and water contaminants from compressed air systems automatically.

Liquid contaminants collected in the bowl cause the float mechanism to rise. When the liquid reaches a specific level the float triggers a mechanism which pilots line pressure against a large-area piston. This action causes the drain orifice to open and evacuate the liquid and particulate contaminants. As the liquid level falls the pilot valve closes, line pressure against the piston returns to atmosphere and the drain valve snaps closed.

Wilkerson's XB3 model automatic drain includes the manual override. The manual override option allows for drainage at times when waiting for the system to drain automatically is not desirable.

Replacement Bowl Kits

- Bowl Guard, Metal (for Plastic Bowls)..... GRP-95-846
- Metal Bowl –
 - Automatic Float Drain..... GRP-96-007
 - Brass Petcock..... GRP-95-539
 - Sight Gauge, Brass Petcock LRP-95-673
- Plastic Bowl –
 - Flex Tip Drain FRP-95-017
 - Plastic Petcock Drain LRP-96-543
- Plastic Bowl, Metal Bowl Guard –
 - Automatic Float Drain..... GRP-95-845
 - Flex Tip Drain FRP-95-847

Accessories

- Auto Float Drain –
 - Fluorocarbon GRP-95-981
- Drain, Manual Override For Auto Float Drains –
 - with 1/8 NPT Port..... GRP-96-001
(Use with GRP-95-981 shown above. Order seperately)
- Manual Drain, Flex-Tip..... FRP-95-610

