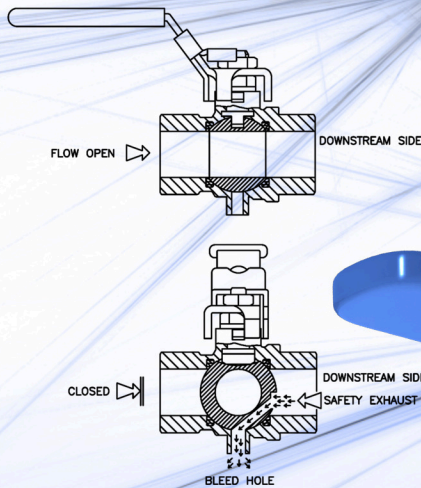


MEETING STANDARDS IS OUR STANDARD

s.93

DOWNSTREAM EXHAUST

FULL PORT HOT FORGED BRASS BALL VALVES WITH LOCKABLE HANDLE - MEETS OSHA REQUIREMENTS. TYPICAL APPLICATION FOR s.93 RuB BALL VALVES IS COMPRESSED AIR SYSTEMS.



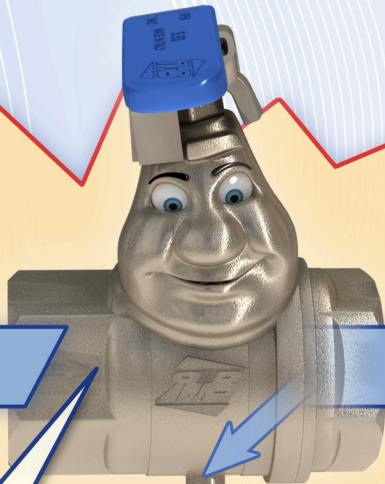
BULLET LIST:

- HOT FORGED SAND BLASTED BRASS BODY AND CAP SEALED WITH LOCTITE®,
- VALVE BODY INCLUDES A DOWNSTREAM DEPRESSURIZATION VENTING OUTLET TAPPED TO DIRECT EXHAUST AIR AND ASSEMBLE MUFFLERS FOR NOISE CONTROL,
- FINEST BRASS ACCORDING TO EN 12165 AND EN 12164 (FORMERLY DIN 17660 AND UNI 5705-65) SPECIFICATIONS,
- FULL PORT TO DIN 3357 FOR MAXIMUM FLOW,
- GLASS FILLED PTFE SELF-LUBRICATING SEATS WITH FLEXIBLE-LIP DESIGN,
- CHROME PLATED BRASS BALL FOR LONGER LIFE,
- NO METAL-TO-METAL MOVING PARTS,
- BLOWOUT-PROOF BRASS STEM,
- PURE PTFE ADJUSTABLE PACKING GLAND AND WASHER FOR LOWER TORQUE AND EASY MAINTENANCE,
- HANDLE STOPS ON BODY TO AVOID STRESSES AT STEM,
- HANDLE REMOVABLE WITH VALVE IN SERVICE,
- PATENTED LOCKABLE CARBON STEEL HANDLE WITH GEOMET® RUST PROTECTION AND THICK PVC GRIP. PAT # 7074-B/90,
- HANDLE CLEARLY SHOWS BALL POSITION,
- NPT TAPER ANSI B.1.20.1 FEMALE BY FEMALE THREADS,
- SILICONE-FREE LUBRICANT ON ALL SEALS,
- 200 PSI NON SHOCK COLD WORKING PRESSURE,
- +15°F +210°F TEMPERATURE (WARNING: FREEZING OF THE FLUID IN THE INSTALLATION MAY SEVERELY DAMAGE THE VALVE).

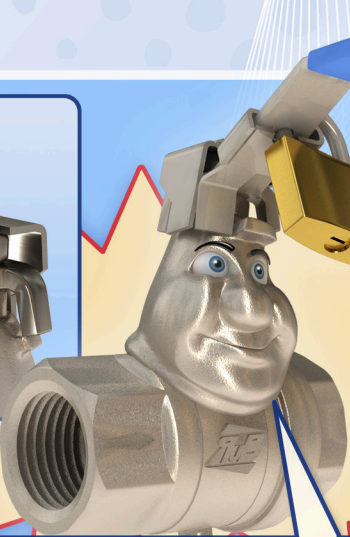
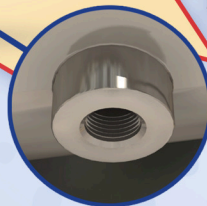


FEATURING PATENTED TAMPER-PROOF LOCKABLE HANDLE THAT HAS NO EQUAL IN THE MARKET. RuB s.93 VALVES, WHEN TURNED TO THE OFF POSITION, NOT ONLY STOP THE SUPPLY OF COMPRESSED AIR, BUT ALSO AUTOMATICALLY AND CONTINUOUSLY EXHAUST ANY RESIDUAL PRESSURE DOWNSTREAM OF THE VALVE. THIS ALLOWS MAINTENANCE OR SET-UP OF THE DOWNSTREAM AIR POWERED EQUIPMENT UNDER A SAFE CONDITION, WITH NO AIR POWER TO THE EQUIPMENT. VALVES ARE LOCKABLE IN THE CLOSED POSITION (AS REQUIRED FOR SAFETY LOCKOUT) BUT CANNOT BE LOCKED IN THE OPEN POSITION, AS REQUIRED IN OSHA 1910.147.

THE PRODUCT DESCRIBED IN THIS DOCUMENT MEETS THE REQUIREMENTS OF PED DIRECTIVE 97/23 AS WELL AS RoHS.



WHEN YOU SHUT ME OFF, I AUTOMATICALLY VENT DOWNSTREAM PRESSURE ALLOWING YOUR MAINTENANCE CREW TO SAFELY OPERATE ON EQUIPMENT. YOU CAN ALSO INSTALL MUFFLERS OR FITTINGS TO BRING VENTED AIR AWAY FROM OPERATORS.



MY LOCKING DEVICE IS PATENTED AND TAMPER-PROOF: WHEN I'M CLOSED YOU CAN LOCK ME, ENSURING NOBODY CAN PRESSURIZE THE EQUIPMENT YOUR CREW IS WORKING ON.



WHEN I'M OPEN NOBODY CAN LOCK ME, SO THAT ANYONE CAN SHUT ME OFF IN CASE OF EMERGENCIES.



I'M SPECIFICALLY DESIGNED FOR COMPRESSED AIR APPLICATIONS! I'M FULL-PORT AND YOUR AIR SUPPLY FLOWS THROUGH ME WITHOUT RESTRICTIONS.



I COMPLY WITH OSHA (USA) REQUIREMENTS AND I HELP ENSURING SAFETY IN WORKPLACES. I OFFER ADDITIONAL OUTSTANDING FEATURES, JUST LIKE OTHER RUB BALL VALVES.

PRINTED ON RECYCLABLE PAPER
 THE COMPANY RESERVES ALL RIGHTS FOR THE INFORMATION CONTAINED HEREIN. PRODUCTS MAY BE CHANGED AT ANY TIME WITHOUT NOTICE.
 ANY UNDATED REFERENCE TO A CODE OR STANDARD SHALL BE INTERPRETED AS REFERRING TO THE LATEST EDITION. XCES89 3D - Revision: 09/2009.